

## Base Styles



Standard HL

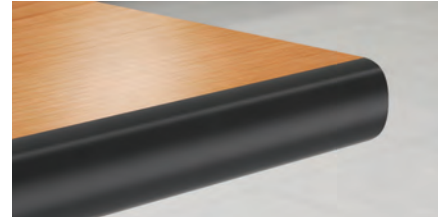


Standard HW

## Top & Edge Styles



3 MM



T-Mold

## Electrical Options



Power/Data Modules



Monitor Arm



Privacy



Power Beam



Daisy Chain

Shown on a standard HW wire access training table. The 8-wire electrical system. Power Beam can be connected table to table using electrical jumpers. A plenum separates and manages low and high voltage wires. Groups of tables can be connected via a Power Beam through the wire access panel's removable end. Seated side receptacles are also available.

Shown on a standard HL training table. Eight surface power modules can be connected to another with the first module providing power from a standard wall receptacle. Eliminates the need for costly electrical installations.